



Contra Costa Emergency Medical Services Agency

EMS System Plan Update 2017

777 ARNOLD DRIVE, SUITE 110
MARTINEZ, CA 94553
PHONE: 925 608-5454-
WWW.CCCEMS.ORG

April 30, 2019

EXECUTIVE SUMMARY:

The following is a summary of the significant changes in the Contra Costa EMS System Plan since the last reporting period:

In 2017 Contra Costa has successfully implemented - the Alliance - emergency ambulance service delivery model. The Alliance is a contractor/subcontractor service model where Contra Costa Fire Protection District is the contracted entity for ambulance service who has subcontracted with Contra Costa legacy partner American Medical Response to provide the ambulance services. The contract went into effect as of January 1, 2016 associated with an EMS System Redesign that included Emergency Response Zone modifications. The partnership with the Alliance continues to be highly collaborative with an exceptional track record of emergency ambulance performance benefitting the countywide EMS System.

The EMS Agency continues to work internally on a variety of comprehensive data infrastructure upgrades to position the EMS System for integration partnership with the local health care system. The EMS Agency HIE planning continues and is designed to integrate with community hospitals who use EPIC Health Information System.

The County EMS Agency continues to be successful in supporting our local ambulance patient offload time initiatives creating dynamic "live stories" reports that allow hospitals to download their own data for improvement. The reports are public and available at <https://insight.livestories.com/s/v2/apot-story/c5f828c1-05d1-415a-a816-52f95f09e537/>

Contra Costa EMS System partners have played a critical role in supporting wildfire response, medical needs sheltering and evacuation of skilled nursing and hospital patients two years in a row. Our Medical Reserve Corps has provided critical needs within hours of a regional event. The County has collaborated with Region II MHOACs to establish the first cooperative medical health agreement in the Region.

In addition, we continue to play a key role in providing subject matter expertise promoting local, regional, state and national neonatal and pediatric disaster preparedness. Under Contra Costa EMS Medical Director leadership of Dr. David Goldstein, CCEMS continues to support and sustain a high-performance EMS System committed to patient safety and quality improvement and was awarded the Mission Lifeline Gold Plus Award for outstanding improvement and performance in the area of high-risk heart attack care.

Respectfully,



Patricia Frost RN, MS, PHN, PNP
EMS Director
Contra Costa Health Services

2017 Emergency Medical Services (EMS) System Plan¹

SYSTEM PLAN SMART² OBJECTIVES

Progress from Last Reporting Period

No.	Standard	Meets State Standard	FY 2016–2017 Objectives	Progress to Date
1.06	Annual system Plan Update	Yes	Annual EMS System Update to State EMS Authority (EMSA)	Progress to Date: In Progress to be submitted EMSA
1.07	Trauma Planning	Yes	Annual Trauma System Status Report.	Progress to Date: Met Update due annually.
1.08	ALS Planning	Yes	EMS system integration of emergency ambulance services	Progress to Date: Met Update provided annually
1.10	Special Populations	Yes	Exploration of alternative delivery models to match patient need to resource.	Progress to Date: In Progress 1-5 years. Engaged with local Health System partners to explore opportunities.
1.11	System Participants	Yes	Stakeholder participation in update, approval and implementation of new ambulance ordinance	Progress to Date: In Progress Ordinance review by EMCC and BOS with implementation within next 12 months
1.13	Coordination	Yes	Exploration of coordination of EMS Dispatch Centers with Nurse Call centers to support appropriate use of 9-1-1 or specialty dispatch and triage call centers	Progress to Date: Not started Engage stakeholders within 1-5 years
1.14	Policy and Procedure Manual	Yes	Annually update of prehospital care policies and procedures based on evidence-based care.	Progress to Date: Ongoing Updated policies and protocols posted on EMS website at www.cccems.org .
			Annually evaluate all patient care based on evidence-based care optimizing patient benefit and patient safety. Implement First Pass analytics for support CQI efforts.	Progress to Date: Ongoing Annually. Continue to enhance systems of care policies and practices to support improved patient outcomes

¹ Approved by the EMCC on 3/8/2017

² SMART: Specific, Measurable, Achievable, Realistic and Timely

No.	Standard	Meets State Standard	FY 2016-2017 Objectives	Progress to Date
1.16	System Finances	Yes	Annually review of costs and fees to support sustainable EMS System and EMS Agency oversight and operations.	Progress to Date: Ongoing Monitor and manage current funding effectively to support sustainable programs and activities.
1.20	DNR (Do Not Resuscitate)	Yes	Pilot site for (POLST) registry with EMS System Stakeholders over 12 months.	Progress to date: Ongoing Member of POLST Conversation Project within county. Pilot project site for POLST registry.
1.27	Pediatric Emergency Medical and Critical Care System	Yes	Pediatric EMS for Children (EMSC) System Program Plan update and regulation implementation within 1-5 years.	Progress to date: In progress. State EMSC regulations not final. Active on EMSC Technically Advisory Committee. Complete update of EMSC Program within 24 months.
1.28	Exclusive Operating Area (EOA)	Yes	Update of county ambulance ordinance within 12-18 months. Review of EOA IV related to ambulance procurement.	Progress to date: In progress. Update of ambulance response areas completed as part of ambulance EOA IV effective January 1, 2016. Ambulance ordinance update in progress.
2.01	Local EMS Agency Staffing and Assessment of Needs	Yes	EMS System Study and Modernization Project review of LEMSA staffing needs and workflows to support statutory requirements within 1-2 years.	Progress to date: Ongoing. Re-align LEMSA staffing in line with required statutory functions, quality and medical oversight.
2.04	Dispatch Training	Yes	Promote support high quality Emergency Medical Dispatch (EMD) dispatcher training and performance consistent for Center of Excellence Accreditation within 3-5 years.	Progress to date: In progress. Dispatch medical oversight policies consistent with Center of Excellence national standards. EMS procurement supports unified and accredited dispatch.
2.06	Response	Yes	Contra Costa EMS (CCEMS) continues ongoing evaluation of sustainability of EMS System partners based on safety, funding and opportunities for health care reimbursement.	Progress to date: Ongoing Monitoring coordinated response of ambulance and first responders. Continuing to evaluate impacts to EMS associated with hospital and fire station closures
2.12	Early Defibrillation	Yes	Continued expansion of public access Automated External Defibrillation (AED) and Law AED programs with integration into dispatch.	Progress to Date: Ongoing. Continue to engage community first responders and citizen responders. Using CodeSTAT, CARES, AED registry, PAD and Public training.

No.	Standard	Meets State Standard	FY 2016-2017 Objectives	Progress to Date
5.06	Hospital Evacuation Plan	Yes	Update medical surge and transportation plans for hospitals incorporating standardized training with HICS for all hospital facilities with opportunities for integration of first responders with hospital leadership and incident commanders.	Progress to date: In progress Plan updates within 1-3 years. Update of MCI plan and Pediatric Surge Toolkit.
5.10	Pediatric Emergency and Critical Care System	Yes	Continued networking with pediatric emergency care advocates throughout the local, regional and state EMS systems supporting pediatric emergency care best practices.	Progress to date: Ongoing CCEMS and Alameda County (ALCO) EMS have collaborative program of active advocacy for emergency preparedness for children.
5.13	Specialty System Design	Yes	Annual Stroke, STEMI , Trauma and Cardiac Arrest System Evaluation. Exploring partnerships with Contra Costa Health services to reduce 5150 and support appropriate use of sobering centers.	Progress to date: Ongoing Continuous CQI program & participation in California Stroke Registry, Cardiac Arrest Registry for Enhanced Survival (CARES), Trauma Registry and California EMS Information System (CEMSIS).
5.14	Public Input	Yes	Active program of engagement with public including quarterly Emergency Medical Care Committee (EMCC) meetings. EMCC bylaw update	Progress to date: Ongoing. Public and EMCC comment to be included as part of ambulance ordinance review and update process.
6.01	QA/QI Program	Yes	Bi-annual public reporting EMS Hospital transfer of care never event monitoring. Implementation of Quality Review Team (QRT) for review of event reports concerning clinical care concerns.	Progress to date: Ongoing Hospitals public reporting continues. QRT implemented and reviewing cases for trends.
			Exploring HIE with hospitals to support exchange of patient outcome information. Hospital and ambulance provider electronic Patient Care Record (ePCR) data exchange. Stakeholders informed and advised to support HIE by January 2018	Progress to date: In progress Exploration continues between EMS agency, American Medical Response (AMR) , Kaiser, California Office of Health Information Integrity (CALOHII) and EMS Authority.
7.01	Public Education	Yes	Expansion of <i>HeartSafe</i> Communities to include support for CPR, Public Access Defibrillation (PAD), Heart Attack, Stroke and Healthy Lifestyle.	Progress to date: Ongoing continue countywide expansion of outreach in progress.
7.03	Disaster Preparedness Promotion	Yes	Annual advocacy and implementation of regional pediatric medical surge planning. Develop policies and work with stakeholders for implementation and use of BLS providers to backup 911 system in surge	Progress to date: Ongoing CCEMS participating in National, regional and statewide efforts supporting Med/Health Preparedness.

No.	Standard	Meets State Standard	FY 2016-2017 Objectives	Progress to Date
8.13	Disaster Medical Response	Yes	Sustain Contra Costa Medical Reserve Corp and demonstrate effective deployment Medical Reserve Corps (MRC) for medical health response as needed.	Progress to date: Ongoing MRC coordinator in place to support training to enable effective deployment of MRC.
8.15	Interhospital Communications	Yes	Address ongoing gaps in emergency communications e.g. ReddiNet, evaluate emergency communication tools and apps. Identify and address gaps in East Bay Regional Communications System (EBRCS) hospital radio system.	Progress to date: Ongoing. Annually monitor, exercise support and upgrade as fiscally able inter-hospital communications
8.18	Enhanced Level: Specialty Care Systems	Yes	Update of new state regulations for specialty care systems e.g. Trauma, ST Elevation Myocardial Infarction (STEMI), Stroke, EMSC.	Progress to date: Ongoing Annually involved in the development through EMSAAC

2018 TIMELINE & ACTIONS TO BE ADDRESSED

All State standards have been met. We plan to address or reassess the following SMART objectives.

No.	Standard	Meets State Standard	2018 Objectives	Time Frame
1.06	Annual System Plan Update	Yes	Update Annually.	Annually
1.08	ALS Planning	Yes	Support successful ambulance provider transition and monitor for system gaps	Annually
1.10	Special Populations	Yes	Exploration of alternative delivery models to match patient need to resource.	Annually
1.11	System Participants	Yes	Stakeholder participation in implementation of ambulance ordinance.	1-2 years
1.13	Coordination	Yes	Exploration of EMS dispatch services, exploration of coordination with Nurse Call centers to support appropriate utilization of 9-1-1 services.	1-5 years
1.14	Policy and Procedure Manual	Yes	Update of prehospital care policies and procedures based on prehospital evidence-based care. Implementation of new American Heart Association Guidelines for ALS.	Annually
			Continue to evaluate policies and standard operating procedures for patient benefit, delay in definite care and patient safety. Revise protocols to control cost while prioritizing patient safety.	Annually
1.16	System Finances	Yes	Review of fees and costs to support sustainable delivery of EMS services.	Annually
1.20	Do Not Resuscitate (DNR)	Yes	Evaluate EMS Pilot of POLST registry project	Dec 2018
1.27	Pediatric Emergency Medical and Critical Care System	Yes	Update of Pediatric EMSC plan and future implementation of State Pediatric EMSC System of Care regulations.	3 years
1.28	Exclusive Operating Area	Yes	Re-evaluation EOA IV (San Ramon Fire Protection District) exclusivity	1 year
2.01	Local EMS Agency Staffing and Assessment of Needs	Yes	Annual review of EMS Staffing needs and workflows to support statutory requirements.	Annually
2.04	Dispatch Training	Yes	Support high quality EMD and dispatcher training for Center of Excellence Accreditation.	Annually
2.12	Early Defibrillation	Yes	Expand and enhance Public Access AED and Law AED programs within fiscal resources	Annually
5.06	Hospital Evacuation Plan	Yes	Update of medical surge and transportation plans for hospitals.	1-3 years
5.08	Trauma Planning	Yes	Update of trauma plan.	Annually
5.10	Pediatric Emergency and Critical Care System	Yes	Continued networking with pediatric emergency care advocates throughout the local, regional and state EMS systems supporting pediatric emergency care best practices.	Annually

No.	Standard	Meets State Standard	2018 Objectives	Time Frame
5.13	Specialty System Design	Yes	Stroke, STEMI, Cardiac Arrest, Trauma, EMS for Children System Program Evaluation.	Annually
5.14	Public Input	Yes	Support EMCC engagement on EMS system issues	Annually
6.01	Quality Assurance (QA) /Quality Improvement (QI) Program	Yes	Evaluate EMS-Hospital data system integration supporting patient safety and prehospital care. Develop Health Information Exchange between EMS ePCR and EPIC (hospital medical record platform)	1-4 years
7.01	Public Education	Yes	Sustain <i>HeartSafe</i> Communities to include support for CPR, PAD, Heart Attack, Stroke and Healthy Lifestyle.	Annually
7.03	Disaster Preparedness Promotion	Yes	Continued advocacy and implementation of regional pediatric medical surge planning. Participation on statewide Pediatric Surge Plan Workgroup	1-2 yrs
8.13	Disaster Medical Response	Yes	Sustain development and recruitment of Contra Costa Medical Reserve Corp volunteers. Effective MRC capability for medical health deployment as needed.	Annually
8.15	Interhospital Communications	Yes	Address ongoing gaps and improvement opportunities for ReddiNet platform to support reliable use by hospitals. Routinely exercise med/health emergency communications	Annually
8.18	Enhanced Level: Specialty Care Systems	Yes	Evaluate new regulations for specialty care system implementation when complete .e.g. STEMI, Stroke, EMS for Children.	1-2 years

A. SYSTEM ORGANIZATION AND MANAGEMENT

		Does not currently meet standard	Meets minimum standard	Meets recommended guidelines	Short-range plan	Long-range plan
Agency Administration:						
1.01	LEMSA Structure		X			
1.02	LEMSA Mission		X			
1.03	Public Input		X			
1.04	Medical Director		X	X		
Planning Activities:						
1.05	System Plan		X			
1.06	Annual Plan Update		X			
1.07	Trauma Planning		X	X		
1.08	ALS Planning		X			
1.09	Inventory of Resources		X			
1.10	Special Populations		X	X		
1.11	System Participants		X	X		
Regulatory Activities:						
1.12	Review & Monitoring		X			
1.13	Coordination		X			
1.14	Policy & Procedures Manual		X			
1.15	Compliance w/Policies		X			
System Finances:						
1.16	Funding Mechanism		X			
Medical Direction:						
1.17	Medical Direction		X			
1.18	QA/QI		X	X		
1.19	Policies, Procedures, Protocols		X	X		

SYSTEM ORGANIZATION AND MANAGEMENT (continued)

		Does not currently meet standard	Meets minimum standard	Meets recommended guidelines	Short-range plan	Long-range plan
1.20	DNR Policy		X			
1.21	Determination of Death		X			
1.22	Reporting of Abuse		X			
1.23	Interfacility Transfer		X			
Enhanced Level: Advanced Life Support						
1.24	ALS Systems		X	X		
1.25	On-Line Medical Direction		X	X		
Enhanced Level: Trauma Care System:						
1.26	Trauma System Plan		X			
Enhanced Level: Pediatric Emergency Medical and Critical Care System:						
1.27	Pediatric System Plan		X			
Enhanced Level: Exclusive Operating Areas:						
1.28	EOA Plan		X			

B. STAFFING/TRAINING

		Does not currently meet standard	Meets minimum standard	Meets recommended guidelines	Short-range plan	Long-range plan
Local EMS Agency:						
2.01	Assessment of Needs		X			
2.02	Approval of Training		X			
2.03	Personnel		X			
Dispatchers:						
2.04	Dispatch Training		X	X		
First Responders (non-transporting):						
2.05	First Responder Training		X	X		
2.06	Response		X			
2.07	Medical Control		X			
Transporting Personnel:						
2.08	EMT-I Training		X	X		
Hospital:						
2.09	CPR Training		X			
2.10	Advanced Life Support		X	X		
Enhanced Level: Advanced Life Support:						
2.11	Accreditation Process		X			
2.12	Early Defibrillation		X			
2.13	Base Hospital Personnel		X			

C. COMMUNICATIONS

		Does not currently meet standard	Meets minimum standard	Meets recommended guidelines	Short-range plan	Long-range plan
Communications Equipment:						
3.01	Communication Plan		X	X		
3.02	Radios		X	X		
3.03	Interfacility Transfer		X			
3.04	Dispatch Center		X			
3.05	Hospitals		X	X		
3.06	MCI/Disasters		X			
Public Access:						
3.07	9-1-1 Planning/Coordination		X	X		
3.08	9-1-1 Public Education		X			
Resource Management:						
3.09	Dispatch Triage		X	X		
3.10	Integrated Dispatch		X	X		

D. RESPONSE/TRANSPORTATION

	Does not currently meet standard	Meets minimum standard	Meets recommended guidelines	Short-range plan	Long-range plan
Universal Level:					
4.01	Service Area Boundaries		X	X	
4.02	Monitoring		X	X	
4.03	Classifying Medical Requests		X		
4.04	Prescheduled Responses		X		
4.05	Response Time		X	X	
4.06	Staffing		X		
4.07	First Responder Agencies		X		
4.08	Medical & Rescue Aircraft		X		
4.09	Air Dispatch Center		X		
4.10	Aircraft Availability		X		
4.11	Specialty Vehicles		X	X	
4.12	Disaster Response		X		
4.13	Intercounty Response		X	X	
4.14	Incident Command System		X		
4.15	MCI Plans		X		
Enhanced Level: Advanced Life Support:					
4.16	ALS Staffing		X	X	
4.17	ALS Equipment		X		
Enhanced Level: Ambulance Regulation:					
4.18	Compliance		X		
Enhanced Level: Exclusive Operating Permits:					
4.19	Transportation Plan		X		
4.20	"Grandfathering"		X		
4.21	Compliance		X		
4.22	Evaluation		X		

E. FACILITIES/CRITICAL CARE

		Does not currently meet standard	Meets minimum standard	Meets recommended guidelines	Short-range plan	Long-range plan
Universal Level:						
5.01	Assessment of Capabilities		X	X		
5.02	Triage & Transfer Protocols		X			
5.03	Transfer Guidelines		X			
5.04	Specialty Care Facilities		X			
5.05	Mass Casualty Management		X	X		
5.06	Hospital Evacuation		X			
Enhanced Level: Advanced Life Support:						
5.07	Base Hospital Designation		X			
Enhanced Level: Trauma Care System:						
5.08	Trauma System Design		X			
5.09	Public Input		X			
Enhanced Level: Pediatric Emergency Medical and Critical Care System:						
5.10	Pediatric System Design		X			
5.11	Emergency Departments		X	X		
5.12	Public Input		X			
Enhanced Level: Other Specialty Care Systems:						
5.13	Specialty System Design		X			
5.14	Public Input		X			

F. DATA COLLECTION/SYSTEM EVALUATION

		Does not currently meet standard	Meets minimum standard	Meets recommended guidelines	Short-range plan	Long-range plan
Universal Level:						
6.01	QA/QI Program		X	X		
6.02	Prehospital Records		X			
6.03	Prehospital Care Audits		X	X		
6.04	Medical Dispatch		X			
6.05	Data Management System		X	X		
6.06	System Design Evaluation		X			
6.07	Provider Participation		X			
6.08	Reporting		X			
Enhanced Level: Advanced Life Support:						
6.09	ALS Audit		X	X		
Enhanced Level: Trauma Care System:						
6.10	Trauma System Evaluation		X			
6.11	Trauma Center Data		X	X		

G. PUBLIC INFORMATION AND EDUCATION

		Does not currently meet standard	Meets minimum standard	Meets recommended guidelines	Short-range plan	Long-range plan
Universal Level:						
7.01	Public Information Materials		X	X		
7.02	Injury Control		X	X		
7.03	Disaster Preparedness		X	X		
7.04	First Aid & CPR Training		X	X		

H. DISASTER MEDICAL RESPONSE

		Does not currently meet standard	Meets minimum standard	Meets recommended guidelines	Short-range plan	Long-range plan
Universal Level:						
8.01	Disaster Medical Planning		X			
8.02	Response Plans		X	X		
8.03	HazMat Training		X			
8.04	Incident Command System		X	X		
8.05	Distribution of Casualties		X	X		
8.06	Needs Assessment		X	X		
8.07	Disaster Communications		X			
8.08	Inventory of Resources		X	X		
8.09	DMAT Teams		X	X		
8.10	Mutual Aid Agreements		X			
8.11	CCP Designation		X			
8.12	Establishment of CCPs		X			
8.13	Disaster Medical Training		X	X		
8.14	Hospital Plans		X	X		
8.15	Interhospital Communications		X	X		
8.16	Prehospital Agency Plans		X			
Enhanced Level: Advanced Life Support:						
8.17	ALS Policies		X			
Enhanced Level: Specialty Care Systems:						
8.18	Specialty Center Roles		X			
Enhanced Level: Exclusive Operating Areas/Ambulance Regulations:						
8.19	Waiving Exclusivity		X			

TABLE 2: SYSTEM RESOURCES AND OPERATIONS**System Organization and Management**Reporting Year: 2017

1. Percentage of population served by each level of care by county:
(Identify for the maximum level of service offered; the total of a, b, and c should equal 100%.)

County: Contra Costa County

A. Basic Life Support (BLS)	<u>0</u> %
B. Limited Advanced Life Support (LALS)	<u>0</u> %
C. Advanced Life Support (ALS)	<u>100</u> %

2. Type of agency	<u>B</u>
a) Public Health Department	
b) <u>County Health Services Agency</u>	
c) Other (non-health) County Department	
d) Joint Powers Agency	
e) Private Non-Profit Entity	
f) Other: _____	

3. The person responsible for day-to-day activities of the EMS agency reports to	<u>B</u>
a) Public Health Officer	
b) <u>Health Services Agency Director/Administrator</u>	
c) Board of Directors	
d) Other: _____	

4. Indicate the non-required functions which are performed by the agency:

Implementation of exclusive operating areas (ambulance franchising)	<u>X</u>
Designation of trauma centers/trauma care system planning	<u>X</u>
Designation/approval of pediatric facilities	<u>X</u>
Designation of STEMI centers	<u>X</u>
Designation of Stroke centers	<u>X</u>
Designation of other critical care centers	<u>X</u>
Development of transfer agreements	<u>X</u>
Enforcement of local ambulance ordinance	<u>X</u>
Enforcement of ambulance service contracts	<u>X</u>
Operation of ambulance service	<u>N/A</u>

Table 2 - System Organization & Management (cont.)

Continuing education	<u>X</u>
Personnel training	<u>N/A</u>
Operation of oversight of EMS dispatch center	
Non-medical disaster planning	<u>X</u>
Administration of critical incident stress debriefing team (CISD)	<u>N/A</u>
Administration of disaster medical assistance team (DMAT)	<u>N/A</u>
Administration of EMS Fund [Senate Bill (SB) 12/612]	<u>X</u>
Other: Tracking and monitoring hospital emergency and critical care capacity	<u>X</u>
Other: Procuring and monitoring emergency ambulance services countywide	<u>X</u>
Other: Implementing EMS program enhancements funded under County Service Area EM-1	<u>X</u>
Other: Planning for/coordinating disaster medical response at local/regional levels	<u>X</u>

5. EXPENSES FY 16/17 (**)	Table 2 - System Organization & Management (cont.)
Salaries and benefits	\$2,434,618
Contract services	\$164,806
Operations (e.g. copying, postage, facilities)	\$428,132
Travel	\$24,061
Fixed assets	\$0
Indirect expenses (overhead)	\$291,904
Ambulance subsidy	\$0
EMS Fund payments to physicians/hospital	\$1,486,246
Dispatch center operations (non-staff)	\$250,000
Training program operations	\$0
Other: 1st Responder Enhancements	\$2,364,133
TOTAL EXPENSES	\$7,443,900
6. SOURCES OF REVENUE FY 16/17 (**)	
Special project grant(s) [from EMSA]	\$0
Preventive Health and Health Services (PHHS) Block Grant	\$0
Office of Traffic Safety (OTS)	\$0
State general fund (RDMHS)	\$0
County general fund	\$0
Other local tax funds (e.g., EMS district)	\$4,513,692
County contracts (e.g., multi-county agencies)	\$0
Certification fees	\$60,196
Training program approval fees	\$0
Training program tuition/Average daily attendance funds (ADA)	\$0
Job Training Partnership ACT (JTPA) funds/other payments	\$0
Base hospital application fees	\$0
Base hospital designation fees	\$0
Trauma center application fees	\$0
Trauma center designation fees	\$250,000
Pediatric facility approval fees	\$0
Pediatric facility designation fees	\$0
Other critical care center designation fees (STEMI/Stroke)	\$75,000
Ambulance service/vehicle fees/CCTP revenue	\$67,500
Contributions/other revenue	\$548,398
EMS Fund (SB 12/612)	\$1,864,586
Other: Ambulance Penalty Fees	\$355,450
Other grants: UASI, HIE, NACCHO, SHGP,DHS, HPP	\$397,148
TOTAL REVENUE (**)	\$8,131,970
Surplus (deficit)	\$688,070
Reserve contribution from prior year	\$395,340
Balance	\$1,083,410

** Expenses and revenue vary year to year associated with grant awards, penalties and EMS district funds. During years revenue exceeds expenses that revenue is placed in reserve for the next fiscal year.

Table 2 - System Organization & Management (cont.)**7. Fee structure (2017):**

First responder certification		<u>\$0</u>
EMS dispatcher certification		<u>\$0</u>
EMT-I certification (This includes the \$75 EMSA fee)		<u>\$155</u>
EMT-I recertification (This includes the \$37 EMSA fee)		<u>\$117</u>
EMT-defibrillation certification		<u>N/A</u>
EMT-defibrillation recertification		<u>N/A</u>
AEMT certification		<u>N/A</u>
AEMT recertification		<u>N/A</u>
EMT-P accreditation		<u>\$80</u>
Mobile Intensive Care Nurse/ Authorized Registered Nurse (MICN/ARN) certification		<u>\$60</u>
Public Safety First Aid/CPR Program Approval (4yr)		<u>\$1350</u>
EMT-I training program approval (4 yr)		<u>\$3,000</u>
AEMT training program approval		<u>N/A</u>
EMT-P training program approval (4 yr)		<u>\$15,000</u>
MICN/ARN training program approval		<u>N/A</u>
Base hospital application		<u>N/A</u>
Base hospital designation		<u>\$0</u>
Trauma center application		<u>N/A</u>
Trauma center designation		<u>\$250,000</u>
Pediatric facility approval		<u>\$0</u>
Pediatric facility designation		<u>\$0</u>
Other critical care center application		
Type: STROKE CENTER DESIGNATION	(Annually)	<u>\$5,000</u>
Type: STEMI CENTER DESIGNATION	(Annually)	<u>\$5,000</u>
Continuing Education Provider Authorization/Reauthorization		<u>\$2,000</u>
Ambulance re-inspection fee		<u>\$100</u>
Ambulance vehicle permit (Emergency)	(Per ERA)	<u>\$7,500</u>
Other: Ambulance Vehicle Permit (Non-Emergency)		<u>\$7,500</u>
Other: EMS Aircraft Classification		<u>\$250</u>
Other: EMS Aircraft Authorization	(Biennial)	<u>\$15,000</u>
Other: Tactical EMS		<u>\$225</u>
Other: Non-Emergency Paramedic Transfer Program	(\$50/transfer)	<u>\$3000</u>

Table 2 - System Organization & Management (cont.)

CATEGORY	ACTUAL TITLE	FTE POSITIONS (EMS ONLY)	TOP SALARY BY HOURLY EQUIVALENT ³	BENEFITS (%of Salary) ⁴	COMMENTS
EMS Admin./Coord./Director	EMS Director	1	\$ 54.66(base)	37%	MHOAC
EMS Program Coordinator/ Field Liaison	Prehospital Care Program Coordinator	1	\$ 54.19 (base)	37%	EMS Clinical Systems of Care Team Lead/Alternate MHOAC
Program Coordinator/ Field Liaison	Prehospital Care Coordinator	1	\$ 54.22 (base)	37%	EMS Operations and Compliance Team Lead
Program Coordinator/ Field Liaison	Prehospital Care Coordinator(s)	4	\$ 54.22 (base)	37%	Professional Standards, Data Integration, Contract Compliance, EMSC, Trauma
STEMI/Stroke Coordinator	Registered Nurse	1	\$ 61.61(base)	37%	
Medical Director	EMS Medical Director	1	\$ 149.53 (base)	37%	
Disaster Medical Planner	Prehospital Care Coordinator	1	\$ 54.22 (base)	37%	HPP supported position (50%)

Staffing and salaries as of 2016/17

N/A = not applicable

³ Top salary equivalent in the position category. Individual staff salaries based on position qualifications and longevity with organization.

⁴ Standard percentage used to calculate benefits. Actual benefits may be considerably more depending on position and benefits selected by employee, etc. County contribution is not reflected.

Table 2 - System Organization & Management (cont.)

CATEGORY	ACTUAL TITLE	FTE ⁵ POSITIONS (EMS ONLY)	TOP SALARY BY HOURLY EQUIVALENT ⁶	BENEFITS (%of Salary)	COMMENTS
Dispatch/Ambulance Contract Compliance	Prehospital Care Coordinator	1	\$ 54.22(base)	N/A	Dispatch oversight assigned
Medical Planner	Emergency Preparedness Training Coordinator	1	\$38.52 (base)	37%	Contracted HPP supported position
Data Evaluator/Analyst	N/A	N/A	N/A	N/A	
QA/QI Coordinator	Prehospital Care Coordinator	1	\$ 54.22 (base)	37%	
Executive Secretary	Administration Services Assistant III	1	\$ 38.87 (base)	37%	
Other Clerical	Clerk	1	\$16.43 (base)	37%	
Other Clerical	Secretary	1	\$ 26.75 (base)	37%	Vacant
Other	Administrative Analyst	1	\$ 26.75 (base)	37%	Data system support
Other	Account Clerk	1	\$ 26.12 (base)	37%	

⁵ Top salary equivalent in the position category. Individual staff salaries based on position qualifications and longevity with organization.

⁶ Standard percentage used to calculate benefits. Actual benefits may be considerably more depending on position and benefits selected by employee, etc. County contribution is not reflected

Local EMS Agency and County Organization Chart(s)

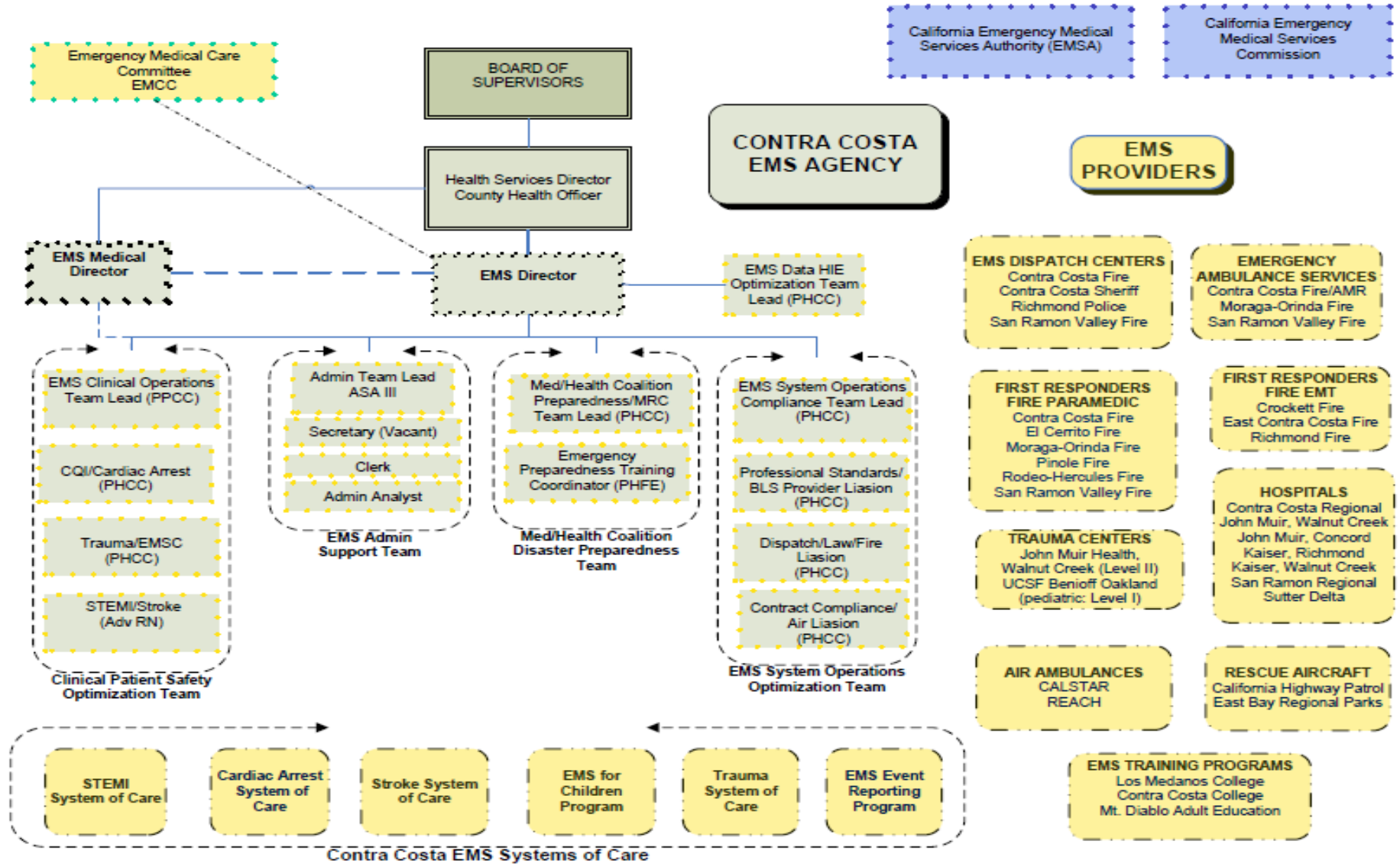


TABLE 3: SYSTEM RESOURCES AND OPERATIONS - Personnel/Training

Reporting Year: 2017

	EMT - Is	AEMTs	EMT - Ps	MICN
Total Certified (active)	994	0		56
Number newly certified this year	NA	0		NA
Number recertified this year	NA	0		NA
Number of accredited personnel this year	NA	0	NA	N/A
Total number of accredited personnel on July 1 of the reporting year	994	0	547	N/A
Number of certification reviews resulting in:				
a) formal investigations	16	0		0
b) probation	16	0		0
c) suspensions	13	0		0
d) revocations	6	0		0
e) denials	2	0		0
f) denials of renewal/warnings	0	0		0
g) no action taken	0	0		0

N/A = not available/applicable

1. Early defibrillation:
 - a) Number of EMT-I (defib) authorized to use AEDs 994
 - b) Number of public safety (defib) certified (non-EMT-I) N/A

2. Do you have an EMR training program yes **no**

TABLE 4: SYSTEM RESOURCES AND OPERATIONS - Communications

County: Contra Costa County

Reporting Year: 2017

1. Number of primary Public Service Answering Points (PSAP)	<u>13</u>
2. Number of secondary PSAPs	<u>3</u>
3. Number of dispatch centers directly dispatching ambulances	<u>3</u>
4. Number of EMS dispatch agencies utilizing EMD guidelines	<u>3</u>
5. Number of designated dispatch centers for EMS Aircraft	<u>3</u>
6. Who is your primary dispatch agency for day-to-day emergencies? <u>Contra Costa County Fire Protection District, Richmond Police Department</u> <u>San Ramon Valley Fire Protection District</u>	
7. Who is your primary dispatch agency for a disaster? <u>Contra Costa County Sheriff's Office</u>	
8. Do you have an operational area disaster communication system?	X Yes <input type="checkbox"/> No
a. Radio primary frequency <u>XCC EMS1 (EBRCS)</u>	
b. Other methods <u>ReddiNet⁷</u>	
c. Can all medical response units communicate on the same disaster communications system?	X Yes <input type="checkbox"/> No
d. Do you participate in the Operational Area Satellite Information System (OASIS)?	X Yes <input type="checkbox"/> No
e. Do you have a plan to utilize the Radio Amateur Civil Emergency Services (RACES) as a back-up communication system?	X Yes <input type="checkbox"/> No
1) Within the operational area?	X Yes <input type="checkbox"/> No
2) Between operation area and the region and/or state?	X Yes <input type="checkbox"/> No

⁷ ReddiNet communications between hospitals, ambulance dispatch centers and EMS Agency; Satellite phones

**TABLE 5: SYSTEM RESOURCES AND OPERATIONS
Response/Transportation**

Reporting Year: 2017

Early Defibrillation Providers

1. Number of EMT-Defibrillation providers:

- a. 3 Crockett, ECCFD and Richmond (Non-ALS Fire First Responders)
- b. 22 Police Agencies

SYSTEM STANDARD RESPONSE TIMES (90TH PERCENTILE)

Enter the response times in the appropriate boxes:

	METRO/URBAN	SUBURBAN/ RURAL	WILDERNESS	SYSTEMWIDE
BLS and CPR capable first responder ⁸	6-8 min	N/A	N/A	6-8 min
Early defibrillation responder ⁹	6-8 min	N/A	N/A	6-8 min
Advanced life support responder ¹⁰	<10 min	N/A	N/A	Varies by Local Jurisdiction
Transport Ambulance (EMS)	< 12 min Varies by EOA	20 min	30 min	Varies by EOA

N/A = not available

⁸ Includes bystanders, law enforcement and EMS

⁹ Includes bystander with PAD, law enforcement and EMS

¹⁰ Fire EMS first medical response paramedic

TABLE 6: SYSTEM RESOURCES AND OPERATIONS
Facilities/Critical Care

Reporting Year: 2017

Trauma

Trauma patients:

1. Number of patients meeting trauma triage criteria	<u>2197</u>
2. Number of major trauma victims transported directly to a trauma center by ambulance	<u>2032</u>
3. Number of major trauma patients transferred to a trauma center ¹¹	<u>NA</u>
4. Number of patients meeting triage criteria who were not treated at a trauma center	<u>NA</u>

Emergency Departments

Total number of emergency departments	<u>8</u>
1. Number of referral emergency services	<u>0</u>
2. Number of standby emergency services ¹²	<u>1</u>
3. Number of basic emergency services	<u>8</u>
4. Number of comprehensive emergency services	<u>0</u>

Receiving Hospitals

1. Number of receiving hospitals with written agreements	<u>7¹³</u>
2. Number of base hospitals with written agreements	<u>1</u>

¹¹ Defined as total number of under-triages for that year.

¹³ Includes STEMI, Stroke and Trauma

TABLE 7: SYSTEM RESOURCES AND OPERATIONS -- Disaster MedicalReporting Year: 2017County: Contra Costa County**SYSTEM RESOURCES**

1. Casualty Collections Points (CCP)

a. Where are your CCPs located?

Attachment 1: Potential Sites and Site Assessment Checklist

Site Name	Address	City
1. Buchanan Airport	550 Sally Ride Drive	Concord
2. Contra Costa Community College	2600 Mission Bell Drive	San Pablo
3. Diablo Valley Community College	321 Golf Club Road	Pleasant Hill
4. Los Medanos Community College	2700 E. Leland Road	Pittsburg
5. Diablo Valley Comm. College Extension	Watermill Road	San Ramon
6. PG&E Conference Center	3301 Crow Canyon Road	San Ramon
7. County Fairgrounds	1201 West 10 th Street	Antioch

b. How are they staffed? Situational¹⁴c. Do you have a supply system for supporting them for 72 hours? **X Yes** No

2. CISD

Do you have a CISD provider with 24 hour capability? **X Yes** No

3. Medical Response Team

a. Do you have any team medical response capability? **X Yes** Nob. For each team, are they incorporated into your local response plan? **X Yes** Noc. Are they available for statewide response?¹⁵ **X Yes** Nod. Are they part of a formal out-of-state response system?¹⁶ **X Yes** No

4. Hazardous Materials

a. Do you have any HazMat trained medical response teams? **X Yes** Nob. At what HazMat level are they trained? **First Responder**c. Do you have the ability to do decontamination in an emergency room? **X Yes** Nod. Do you have the ability to do decontamination in the field? **X Yes** No¹⁴ As specified in Field Treatment Site Appendix F of County MCI Plan¹⁵ Volunteer Medical Reserve Corps¹⁶ Through Office of Civilian Volunteers

OPERATIONS

1. Are you using a Standardized Emergency Management System (SEMS) that incorporates a form of Incident Command System (ICS) structure? **X Yes** No
2. What is the maximum number of local jurisdiction EOCs you will need to interact with in a disaster? 20
3. Have you tested your MCI Plan this year in a:
- a. Real event? Yountville VA evacuation 10/10/2017 **X Yes**
48 - MCI's during 2017
- b. Exercise? **18 Drills including Triage and Tracking 2017** **X Yes** No
- Operational response to mass casualty training (September 2016)
4. List all counties with which you have a written medical mutual aid agreement. Region II Mutual Aid Agreement and California Mutual Aid Agreement¹⁷
5. Do you have formal agreements with hospitals in your operational area to participate in disaster planning and response? **X Yes** No
6. Do you have a formal agreements with community clinics in your operational areas to participate in disaster planning and response? **X Yes** No
7. Are you part of a multi-county EMS system for disaster response? **X Yes** No
8. Are you a separate department or agency? Yes **X No**
9. If not, to whom do you report **Health Officer of Contra Costa Health Services**
8. If your agency is not in the Health Department, do you have a plan to coordinate public health and environmental health issues with the Health Department? **Not applicable¹⁸**

¹⁷ Through California Disaster Mutual Aid Agreement

¹⁸ Agency is part of Contra Costa Health Services (County Health Department)

Table 8: Resource Directory

Reporting Year: 2017

Response/Transportation/Providers

County: Contra Costa County **Provider:** Richmond Fire Department **Response Zone:** Richmond Department Fire

Address: 440 Civic Center Plaza **Number of Ambulance Vehicles in Fleet:** 0
Richmond, CA 94804

Phone Number: 510 307-8031 **Average Number of Ambulances on Duty At 12:00 p.m. (noon) on Any Given Day:** 0

<u>Written Contract:</u> <input checked="" type="checkbox"/> Yes <input type="checkbox"/> No	<u>Medical Director:</u> <input checked="" type="checkbox"/> Yes <input type="checkbox"/> No	<u>System Available 24 Hours:</u> <input checked="" type="checkbox"/> Yes <input type="checkbox"/> No	<u>Level of Service:</u> <input type="checkbox"/> Transport <input type="checkbox"/> ALS <input checked="" type="checkbox"/> 9-1-1 <input checked="" type="checkbox"/> Ground <input checked="" type="checkbox"/> Non-Transport <input checked="" type="checkbox"/> BLS <input checked="" type="checkbox"/> 7-Digit <input type="checkbox"/> Air <input type="checkbox"/> LALS <input type="checkbox"/> CCT <input type="checkbox"/> Water <input type="checkbox"/> IFT
--	--	---	--

<u>Ownership:</u> <input checked="" type="checkbox"/> Public <input type="checkbox"/> Private	<u>If Public:</u> <input checked="" type="checkbox"/> Fire <input type="checkbox"/> Law <input type="checkbox"/> Other Explain:	<u>If Public:</u> <input checked="" type="checkbox"/> City <input type="checkbox"/> County <input type="checkbox"/> State <input type="checkbox"/> District <input type="checkbox"/> Federal	<u>If Air:</u> <input type="checkbox"/> Rotary <input type="checkbox"/> Fixed Wing	<u>Air Classification:</u> <input type="checkbox"/> Auxiliary Rescue <input type="checkbox"/> Air Ambulance <input type="checkbox"/> ALS Rescue <input type="checkbox"/> BLS Rescue
--	--	--	---	--

Transporting Agencies

8,239 Total number of responses
NA Number of emergency responses
NA Number of non-emergency responses

_____ Total number of transports
 _____ Number of emergency transports
 _____ Number of non-emergency transports

Air Ambulance Services

_____ Total number of responses
 _____ Number of emergency responses
 _____ Number of non-emergency responses

_____ Total number of transports
 _____ Number of emergency transports
 _____ Number of non-emergency transports

Table 8: Resource Directory

Reporting Year: 2017

Response/Transportation/Providers

County: Contra Costa County **Provider:** Contra Costa Fire Protection District **Response Zones:** ERA I,II and V

Address: 4005 Port Chicago Highway – Suite 250 **Number of Ambulance Vehicles in Fleet:** 53 (AMR subcontracted)
Concord, CA 94520

Phone Number: 925 941-3300 **Average Number of Ambulances on Duty At 12:00 p.m. (noon) on Any Given Day:** 41 (AMR subcontracted)

<u>Written Contract:</u> <input checked="" type="checkbox"/> Yes <input type="checkbox"/> No	<u>Medical Director:</u> <input checked="" type="checkbox"/> Yes <input type="checkbox"/> No	<u>System Available 24 Hours:</u> <input checked="" type="checkbox"/> Yes <input type="checkbox"/> No	<u>Level of Service:</u> <input checked="" type="checkbox"/> Transport <input checked="" type="checkbox"/> ALS <input checked="" type="checkbox"/> 9-1-1 <input checked="" type="checkbox"/> Ground <input checked="" type="checkbox"/> Non-Transport <input checked="" type="checkbox"/> BLS <input type="checkbox"/> 7-Digit <input type="checkbox"/> Air <input type="checkbox"/> LALS <input type="checkbox"/> CCT <input type="checkbox"/> Water <input checked="" type="checkbox"/> IFT
--	--	---	--

<u>Ownership:</u> <input checked="" type="checkbox"/> Public <input type="checkbox"/> Private	<u>If Public:</u> <input checked="" type="checkbox"/> Fire <input type="checkbox"/> Law <input checked="" type="checkbox"/> Other Explain: Private Subcontractor AMR	<u>If Public:</u> <input type="checkbox"/> City <input checked="" type="checkbox"/> County <input type="checkbox"/> State <input type="checkbox"/> District <input type="checkbox"/> Federal	<u>If Air:</u> <input type="checkbox"/> Rotary <input type="checkbox"/> Fixed Wing	<u>Air Classification:</u> <input type="checkbox"/> Auxiliary Rescue <input type="checkbox"/> Air Ambulance <input type="checkbox"/> ALS Rescue <input type="checkbox"/> BLS Rescue
--	---	--	---	--

Transporting Agencies

<u>93,296</u> Total number of responses	<u>74,111</u> Total number of transports
<u>63,901</u> Number of emergency responses	<u>3,723</u> Number of emergency transports
<u>29,395</u> Number of non-emergency responses	<u>70,388</u> Number of non-emergency transports

Air Ambulance Services

_____ Total number of responses	_____ Total number of transports
_____ Number of emergency responses	_____ Number of emergency transports
_____ Number of non-emergency responses	_____ Number of non-emergency transports

Table 8: Resource Directory

Reporting Year: 2017

Response/Transportation/Providers

County: Contra Costa County **Provider:** San Ramon Valley Fire Protection District **Response Zone:** San Ramon Valley Fire Protection District

Address: 1500 Bollinger Canyon Road **Number of Ambulance Vehicles in Fleet:** 9
San Ramon, CA 94583

Phone Number: 925 838-6680 **Average Number of Ambulances on Duty At 12:00 p.m. (noon) on Any Given Day:** 5

<u>Written Contract:</u> <input checked="" type="checkbox"/> Yes <input type="checkbox"/> No	<u>Medical Director:</u> <input checked="" type="checkbox"/> Yes <input type="checkbox"/> No	<u>System Available 24 Hours:</u> <input checked="" type="checkbox"/> Yes <input type="checkbox"/> No	<u>Level of Service:</u> <input checked="" type="checkbox"/> Transport <input checked="" type="checkbox"/> ALS <input checked="" type="checkbox"/> 9-1-1 <input checked="" type="checkbox"/> Ground <input checked="" type="checkbox"/> Non-Transport <input checked="" type="checkbox"/> BLS <input type="checkbox"/> 7-Digit <input type="checkbox"/> Air <input type="checkbox"/> LALS <input type="checkbox"/> CCT <input type="checkbox"/> Water <input type="checkbox"/> IFT
--	--	---	---

<u>Ownership:</u> <input checked="" type="checkbox"/> Public <input type="checkbox"/> Private	<u>If Public:</u> <input checked="" type="checkbox"/> Fire <input type="checkbox"/> Law <input type="checkbox"/> Other Explain:	<u>If Public:</u> <input type="checkbox"/> City <input type="checkbox"/> County <input type="checkbox"/> State <input checked="" type="checkbox"/> District <input type="checkbox"/> Federal	<u>If Air:</u> <input type="checkbox"/> Rotary <input type="checkbox"/> Fixed Wing	<u>Air Classification:</u> <input type="checkbox"/> Auxiliary Rescue <input type="checkbox"/> Air Ambulance <input type="checkbox"/> ALS Rescue <input type="checkbox"/> BLS Rescue
--	--	--	---	--

Transporting Agencies

7,199 Total number of responses
6,319 Number of emergency responses
880 Number of non-emergency responses

4,500 Total number of transports
575 Number of emergency transports
3,925 Number of non-emergency transports

Air Ambulance Services

_____ Total number of responses
 _____ Number of emergency responses
 _____ Number of non-emergency responses

_____ Total number of transports
 _____ Number of emergency transports
 _____ Number of non-emergency transports

Table 8: Resource Directory

Reporting Year: 2017

Response/Transportation/Providers

County: Contra Costa County **Provider:** East Contra Costa Fire Protection District **Response Zone:** East Contra Costa Fire Protection District

Address: 150 City Park Way **Number of Ambulance Vehicles in Fleet:** 0
Brentwood, CA 94513

Phone Number: 925 634-3400 **Average Number of Ambulances on Duty At 12:00 p.m. (noon) on Any Given Day:** 0

<u>Written Contract:</u> <input checked="" type="checkbox"/> Yes <input type="checkbox"/> No	<u>Medical Director:</u> <input checked="" type="checkbox"/> Yes <input type="checkbox"/> No	<u>System Available 24 Hours:</u> <input checked="" type="checkbox"/> Yes <input type="checkbox"/> No	<u>Level of Service:</u> <input type="checkbox"/> Transport <input type="checkbox"/> ALS <input checked="" type="checkbox"/> 9-1-1 <input checked="" type="checkbox"/> Ground <input checked="" type="checkbox"/> Non-Transport <input checked="" type="checkbox"/> BLS <input type="checkbox"/> 7-Digit <input type="checkbox"/> Air <input type="checkbox"/> LALS <input type="checkbox"/> CCT <input type="checkbox"/> Water <input type="checkbox"/> IFT
--	--	---	---

<u>Ownership:</u> <input checked="" type="checkbox"/> Public <input type="checkbox"/> Private	<u>If Public:</u> <input checked="" type="checkbox"/> Fire <input type="checkbox"/> Law <input type="checkbox"/> Other Explain:	<u>If Public:</u> <input type="checkbox"/> City <input type="checkbox"/> County <input type="checkbox"/> State <input checked="" type="checkbox"/> District <input type="checkbox"/> Federal	<u>If Air:</u> <input type="checkbox"/> Rotary <input type="checkbox"/> Fixed Wing	<u>Air Classification:</u> <input type="checkbox"/> Auxiliary Rescue <input type="checkbox"/> Air Ambulance <input type="checkbox"/> ALS Rescue <input type="checkbox"/> BLS Rescue
--	--	--	---	--

Transporting Agencies

7,530 Total number of responses
6,426 Number of emergency responses
1,104 Number of non-emergency responses

_____ Total number of transports
 _____ Number of emergency transports
 _____ Number of non-emergency transports

Air Ambulance Services

_____ Total number of responses
 _____ Number of emergency responses
 _____ Number of non-emergency responses

_____ Total number of transports
 _____ Number of emergency transports
 _____ Number of non-emergency transports

Table 8: Resource Directory

Reporting Year: 2018

Response/Transportation/Providers

County: Contra Costa County **Provider:** El Cerrito Fire Department **Response Zone:** El Cerrito Fire Department

Address: 10900 San Pablo Ave
El Cerrito, CA 94530

Number of Ambulance Vehicles in Fleet: 0

Phone Number: 510 215-4450

Average Number of Ambulances on Duty At 12:00 p.m. (noon) on Any Given Day: 0

<u>Written Contract:</u> <input checked="" type="checkbox"/> Yes <input type="checkbox"/> No	<u>Medical Director:</u> <input checked="" type="checkbox"/> Yes <input type="checkbox"/> No	<u>System Available 24 Hours:</u> <input checked="" type="checkbox"/> Yes <input type="checkbox"/> No	<u>Level of Service:</u> <input type="checkbox"/> Transport <input checked="" type="checkbox"/> ALS <input checked="" type="checkbox"/> 9-1-1 <input checked="" type="checkbox"/> Ground <input checked="" type="checkbox"/> Non-Transport <input checked="" type="checkbox"/> BLS <input type="checkbox"/> 7-Digit <input type="checkbox"/> Air <input type="checkbox"/> LALS <input type="checkbox"/> CCT <input type="checkbox"/> Water <input type="checkbox"/> IFT
--	--	---	--

<u>Ownership:</u> <input checked="" type="checkbox"/> Public <input type="checkbox"/> Private	<u>If Public:</u> <input checked="" type="checkbox"/> Fire <input type="checkbox"/> Law <input type="checkbox"/> Other Explain:	<u>If Public:</u> <input checked="" type="checkbox"/> City <input type="checkbox"/> County <input type="checkbox"/> State <input type="checkbox"/> District <input type="checkbox"/> Federal	<u>If Air:</u> <input type="checkbox"/> Rotary <input type="checkbox"/> Fixed Wing	<u>Air Classification:</u> <input type="checkbox"/> Auxiliary Rescue <input type="checkbox"/> Air Ambulance <input type="checkbox"/> ALS Rescue <input type="checkbox"/> BLS Rescue
--	--	--	---	--

Transporting Agencies

1,643 Total number of responses
1,494 Number of emergency responses
149 Number of non-emergency responses

_____ Total number of transports
_____ Number of emergency transports
_____ Number of non-emergency transports

Air Ambulance Services

_____ Total number of responses
_____ Number of emergency responses
_____ Number of non-emergency responses

_____ Total number of transports
_____ Number of emergency transports
_____ Number of non-emergency transports

Table 8: Resource Directory

Reporting Year: 2017

Response/Transportation/Providers

Note: Table 8 is to be completed for each provider by county. Make copies as needed.

County: Contra Costa County **Provider:** Rodeo Hercules Fire Protection District **Response Zone:** Rodeo Hercules Fire Protection District

Address: 1680 Refugio Valley Road **Number of Ambulance Vehicles in Fleet:** 0
Hercules, CA 94547

Phone Number: 510 799-4561 **Average Number of Ambulances on Duty At 12:00 p.m. (noon) on Any Given Day:** 0

<u>Written Contract:</u> <input checked="" type="checkbox"/> Yes <input type="checkbox"/> No	<u>Medical Director:</u> <input checked="" type="checkbox"/> Yes <input type="checkbox"/> No	<u>System Available 24 Hours:</u> <input checked="" type="checkbox"/> Yes <input type="checkbox"/> No	<u>Level of Service:</u> <input type="checkbox"/> Transport <input type="checkbox"/> ALS <input checked="" type="checkbox"/> 9-1-1 <input checked="" type="checkbox"/> Ground <input checked="" type="checkbox"/> Non-Transport <input checked="" type="checkbox"/> BLS <input type="checkbox"/> 7-Digit <input type="checkbox"/> Air <input type="checkbox"/> LALS <input type="checkbox"/> CCT <input type="checkbox"/> Water <input type="checkbox"/> IFT
--	--	---	---

<u>Ownership:</u> <input checked="" type="checkbox"/> Public <input type="checkbox"/> Private	<u>If Public:</u> <input checked="" type="checkbox"/> Fire <input type="checkbox"/> Law <input type="checkbox"/> Other Explain:	<u>If Public:</u> <input type="checkbox"/> City <input type="checkbox"/> County <input type="checkbox"/> State <input checked="" type="checkbox"/> District <input type="checkbox"/> Federal	<u>If Air:</u> <input type="checkbox"/> Rotary <input type="checkbox"/> Fixed Wing	<u>Air Classification:</u> <input type="checkbox"/> Auxiliary Rescue <input type="checkbox"/> Air Ambulance <input type="checkbox"/> ALS Rescue <input type="checkbox"/> BLS Rescue
--	--	--	---	--

Transporting Agencies

<u>1,509</u> Total number of responses	<u>0</u> Total number of transports
<u>1,070</u> Number of emergency responses	<u>0</u> Number of emergency transports
<u>439</u> Number of non-emergency responses	<u>0</u> Number of non-emergency transports

Air Ambulance Services

<u> </u> Total number of responses	<u>0</u> Total number of transports
<u> </u> Number of emergency responses	<u>0</u> Number of emergency transports
<u> </u> Number of non-emergency responses	<u>0</u> Number of non-emergency transports

Table 8: Resource Directory

Reporting Year: 2017

Response/Transportation/Providers

Note: Table 8 is to be completed for each provider by county. Make copies as needed.

County: Contra Costa County **Provider:** Moraga Orinda Fire Protection District **Response Zone:** Moraga Orinda Fire Protection District

Address: 1280 Moraga Way **Number of Ambulance Vehicles in Fleet:** 4
Moraga, CA 94556

Phone Number: 925 258-4599 **Average Number of Ambulances on Duty At 12:00 p.m. (noon) on Any Given Day:** 1

<u>Written Contract:</u> <input checked="" type="checkbox"/> Yes <input type="checkbox"/> No	<u>Medical Director:</u> <input checked="" type="checkbox"/> Yes <input type="checkbox"/> No	<u>System Available 24 Hours:</u> <input checked="" type="checkbox"/> Yes <input type="checkbox"/> No	<u>Level of Service:</u> <input checked="" type="checkbox"/> Transport <input checked="" type="checkbox"/> ALS <input checked="" type="checkbox"/> 9-1-1 <input checked="" type="checkbox"/> Ground <input checked="" type="checkbox"/> Non-Transport <input checked="" type="checkbox"/> BLS <input type="checkbox"/> 7-Digit <input type="checkbox"/> Air <input type="checkbox"/> LALS <input type="checkbox"/> CCT <input type="checkbox"/> Water <input type="checkbox"/> IFT
--	--	---	---

<u>Ownership:</u> <input checked="" type="checkbox"/> Public <input type="checkbox"/> Private	<u>If Public:</u> <input checked="" type="checkbox"/> Fire <input type="checkbox"/> Law <input type="checkbox"/> Other Explain:	<u>If Public:</u> <input type="checkbox"/> City <input type="checkbox"/> County <input type="checkbox"/> State <input checked="" type="checkbox"/> District <input type="checkbox"/> Federal	<u>If Air:</u> <input type="checkbox"/> Rotary <input type="checkbox"/> Fixed Wing	<u>Air Classification:</u> <input type="checkbox"/> Auxiliary Rescue <input type="checkbox"/> Air Ambulance <input type="checkbox"/> ALS Rescue <input type="checkbox"/> BLS Rescue
--	--	--	---	--

Transporting Agencies

2,256 Total number of responses
1,680 Number of emergency responses
576 Number of non-emergency responses

1,464 Total number of transports
143 Number of emergency transports
1,321 Number of non-emergency transports

Air Ambulance Services

_____ Total number of responses
 _____ Number of emergency responses
 _____ Number of non-emergency responses

_____ Total number of transports
 _____ Number of emergency transports
 _____ Number of non-emergency transports

Table 8: Resource Directory

Reporting Year: 2017

Response/Transportation/Providers

County: Contra Costa County **Provider:** Pinole Fire Department **Response Zone:** Pinole Fire Department

Address: 880 Tennent Ave

Number of Ambulance Vehicles in Fleet: 0

Pinole, CA 94564

Phone Number: 510 724-8969

Average Number of Ambulances on Duty At 12:00 p.m. (noon) on Any Given Day: 0

<u>Written Contract:</u> <input checked="" type="checkbox"/> Yes <input type="checkbox"/> No	<u>Medical Director:</u> <input checked="" type="checkbox"/> Yes <input type="checkbox"/> No	<u>System Available 24 Hours:</u> <input checked="" type="checkbox"/> Yes <input type="checkbox"/> No	<u>Level of Service:</u> <input type="checkbox"/> Transport <input checked="" type="checkbox"/> ALS <input checked="" type="checkbox"/> 9-1-1 <input checked="" type="checkbox"/> Ground <input checked="" type="checkbox"/> Non-Transport <input checked="" type="checkbox"/> BLS <input type="checkbox"/> 7-Digit <input type="checkbox"/> Air <input type="checkbox"/> LALS <input type="checkbox"/> CCT <input type="checkbox"/> Water <input type="checkbox"/> IFT
--	--	---	--

<u>Ownership:</u> <input checked="" type="checkbox"/> Public <input type="checkbox"/> Private	<u>If Public:</u> <input checked="" type="checkbox"/> Fire <input type="checkbox"/> Law <input type="checkbox"/> Other Explain:	<u>If Public:</u> <input checked="" type="checkbox"/> City <input type="checkbox"/> County <input type="checkbox"/> State <input type="checkbox"/> District <input type="checkbox"/> Federal	<u>If Air:</u> <input type="checkbox"/> Rotary <input type="checkbox"/> Fixed Wing	<u>Air Classification:</u> <input type="checkbox"/> Auxiliary Rescue <input type="checkbox"/> Air Ambulance <input type="checkbox"/> ALS Rescue <input type="checkbox"/> BLS Rescue
--	--	--	---	--

Transporting Agencies

2,399 Total number of responses
1,909 Number of emergency responses
490 Number of non-emergency responses

_____ Total number of transports
_____ Number of emergency transports
_____ Number of non-emergency transports

Air Ambulance Services

_____ Total number of responses
_____ Number of emergency responses
_____ Number of non-emergency responses

_____ Total number of transports
_____ Number of emergency transports
_____ Number of non-emergency transports

Table 8: Resource Directory

Reporting Year: 2017

Response/Transportation/Providers

County: Contra Costa County **Provider:** REACH/CALSTAR¹⁹ Air Medical Services **Response Zone:** Countywide

Address: 4933 Bailey Loop **Number of Ambulance Vehicles in Fleet:** 3 (air ambulance)
McClellan, CA 95652

Phone Number: 916 921-4000 **Average Number of Ambulances on Duty At 12:00 p.m. (noon) on Any Given Day:** 1 (air ambulance)

<u>Written Contract:</u> <input checked="" type="checkbox"/> Yes <input type="checkbox"/> No	<u>Medical Director:</u> <input checked="" type="checkbox"/> Yes <input type="checkbox"/> No	<u>System Available 24 Hours:</u> <input checked="" type="checkbox"/> Yes <input type="checkbox"/> No	<u>Level of Service:</u> <input checked="" type="checkbox"/> Transport <input checked="" type="checkbox"/> ALS <input checked="" type="checkbox"/> 9-1-1 <input type="checkbox"/> Ground <input type="checkbox"/> Non-Transport <input type="checkbox"/> BLS <input type="checkbox"/> 7-Digit <input checked="" type="checkbox"/> Air <input type="checkbox"/> LALS <input type="checkbox"/> CCT <input type="checkbox"/> Water <input checked="" type="checkbox"/> IFT
--	--	---	--

<u>Ownership:</u> <input type="checkbox"/> Public <input checked="" type="checkbox"/> Private	<u>If Public:</u> <input type="checkbox"/> Fire <input type="checkbox"/> Law <input type="checkbox"/> Other Explain:	<u>If Public:</u> <input type="checkbox"/> City <input type="checkbox"/> County <input type="checkbox"/> State <input type="checkbox"/> District <input type="checkbox"/> Federal	<u>If Air:</u> <input checked="" type="checkbox"/> Rotary <input type="checkbox"/> Fixed Wing	<u>Air Classification:</u> <input type="checkbox"/> Auxiliary Rescue <input checked="" type="checkbox"/> Air Ambulance <input type="checkbox"/> ALS Rescue <input type="checkbox"/> BLS Rescue
--	---	---	--	---

Transporting Agencies

_____ Total number of responses	_____ Total number of transports
_____ Number of emergency responses	_____ Number of emergency transports
_____ Number of non-emergency responses	_____ Number of non-emergency transports

Air Ambulance Services

<u>805</u> Total number of responses	<u>311</u> Total number of transports
<u>601</u> Number of emergency responses	<u>147</u> Number of emergency transports
<u>204</u> Number of non-emergency responses	<u>164</u> Number of non-emergency transports

¹⁹ REACH acquired CALSTAR and serve EMS System as a single entity

Table 9: Resources Directory

Reporting Year: 2017

Facilities

County: Contra Costa County

Facility: Contra Costa Regional Medical Center
Address: 2500 Alhambra Avenue
Martinez, CA 94553

Telephone Number: 925-370-5000

<u>Written Contract:</u> <input checked="" type="checkbox"/> Yes <input type="checkbox"/> No	<u>Service:</u> <input type="checkbox"/> Referral Emergency <input type="checkbox"/> Standby Emergency <input checked="" type="checkbox"/> <u>Basic Emergency</u> <input type="checkbox"/> Comprehensive Emergency	<u>Base Hospital:</u> <input type="checkbox"/> Yes <input checked="" type="checkbox"/> <u>No</u>	<u>Burn Center:</u> <input type="checkbox"/> Yes <input checked="" type="checkbox"/> <u>No</u>
---	--	---	---

Pediatric Critical Care Center EDAP PICU	<input type="checkbox"/> Yes <input checked="" type="checkbox"/> <u>No</u> <input type="checkbox"/> Yes <input checked="" type="checkbox"/> <u>No</u> <input type="checkbox"/> Yes <input checked="" type="checkbox"/> <u>No</u>	<u>Trauma Center:</u> <input type="checkbox"/> Yes <input checked="" type="checkbox"/> <u>No</u>	<u>If Trauma Center what level:</u> <input type="checkbox"/> Level I <input type="checkbox"/> Level II <input type="checkbox"/> Level III <input type="checkbox"/> Level IV
---	---	---	--

<u>STEMI Center:</u> <input type="checkbox"/> Yes <input checked="" type="checkbox"/> <u>No</u>	<u>Stroke Center:</u> <input type="checkbox"/> Yes <input checked="" type="checkbox"/> <u>No</u>
--	---

Table 9: Resources Directory

Reporting Year: 2017

Facilities

County: Contra Costa County

Facility: John Muir Health, Concord Campus
Address: 2540 East Street
Concord, CA 94520

Telephone Number: 925-682-8200

<p><u>Written Contract:</u></p> <p><input checked="" type="checkbox"/> <u>Yes</u> <input type="checkbox"/> No</p>	<p><u>Service:</u></p> <p><input type="checkbox"/> Referral Emergency <input type="checkbox"/> Standby Emergency <input checked="" type="checkbox"/> <u>Basic Emergency</u> <input type="checkbox"/> Comprehensive Emergency</p>	<p><u>Base Hospital:</u></p> <p><input type="checkbox"/> Yes <input checked="" type="checkbox"/> <u>No</u></p>	<p><u>Burn Center:</u></p> <p><input type="checkbox"/> Yes <input checked="" type="checkbox"/> <u>No</u></p>
--	--	---	---

<p>Pediatric Critical Care Center EDAP PICU</p>	<p><input type="checkbox"/> Yes <input checked="" type="checkbox"/> <u>No</u> <input type="checkbox"/> Yes <input checked="" type="checkbox"/> <u>No</u> <input type="checkbox"/> Yes <input checked="" type="checkbox"/> <u>No</u></p>	<p><u>Trauma Center:</u></p> <p><input type="checkbox"/> Yes <input checked="" type="checkbox"/> <u>No</u></p>	<p><u>If Trauma Center what level:</u></p> <p><input type="checkbox"/> Level I <input type="checkbox"/> Level II <input type="checkbox"/> Level III <input type="checkbox"/> Level IV</p>
--	---	---	---

<p><u>STEMI Center:</u></p> <p><input checked="" type="checkbox"/> <u>Yes</u> <input type="checkbox"/> No</p>	<p><u>Stroke Center:</u></p> <p><input checked="" type="checkbox"/> <u>Yes</u> <input type="checkbox"/> No</p>
--	---

Table 9: Resources Directory

Reporting Year: 2017

Facilities

County: Contra Costa County

Facility: John Muir Health, Walnut Creek Campus
Address: 1601 Ygnacio Valley Road
Walnut Creek, CA 94598

Telephone Number: 925-939-3000

<u>Written Contract:</u> <input checked="" type="checkbox"/> <u>Yes</u> <input type="checkbox"/> No	<u>Service:</u> <input type="checkbox"/> Referral Emergency <input type="checkbox"/> Standby Emergency <input checked="" type="checkbox"/> <u>Basic Emergency</u> <input type="checkbox"/> Comprehensive Emergency	<u>Base Hospital:</u> <input checked="" type="checkbox"/> <u>Yes</u> <input type="checkbox"/> No	<u>Burn Center:</u> <input type="checkbox"/> Yes <input checked="" type="checkbox"/> <u>No</u>
--	--	---	---

Pediatric Critical Care Center EDAP PICU	<input type="checkbox"/> Yes <input checked="" type="checkbox"/> <u>No</u> <input type="checkbox"/> Yes <input checked="" type="checkbox"/> <u>No</u> <input checked="" type="checkbox"/> <u>Yes</u> <input type="checkbox"/> No	<u>Trauma Center:</u> <input checked="" type="checkbox"/> <u>Yes</u> <input type="checkbox"/> No	<u>If Trauma Center what level:</u> <input type="checkbox"/> Level I <input checked="" type="checkbox"/> <u>Level II</u> <input type="checkbox"/> Level III <input type="checkbox"/> Level IV
---	---	---	---

<u>STEMI Center:</u> <input checked="" type="checkbox"/> <u>Yes</u> <input type="checkbox"/> No	<u>Stroke Center:</u> <input checked="" type="checkbox"/> <u>Yes</u> <input type="checkbox"/> No
--	---

Table 9: Resources Directory

Reporting Year: 2017

Facilities

County: Contra Costa County

Facility: Kaiser Permanente Medical Center, Antioch
Address: 5601 Deer Valley Road
Antioch, CA 94531

Telephone Number: 925-813-6500

<p><u>Written Contract:</u></p> <p><input checked="" type="checkbox"/> <u>Yes</u> <input type="checkbox"/> <u>No</u></p>	<p><u>Service:</u></p> <p><input type="checkbox"/> Referral Emergency <input type="checkbox"/> Standby Emergency <input checked="" type="checkbox"/> <u>Basic Emergency</u> <input type="checkbox"/> Comprehensive Emergency</p>	<p><u>Base Hospital:</u></p> <p><input type="checkbox"/> Yes <input checked="" type="checkbox"/> <u>No</u></p>	<p><u>Burn Center:</u></p> <p><input type="checkbox"/> Yes <input checked="" type="checkbox"/> <u>No</u></p>
---	--	---	---

<p>Pediatric Critical Care Center <input type="checkbox"/> Yes <input checked="" type="checkbox"/> <u>No</u> EDAP <input type="checkbox"/> Yes <input checked="" type="checkbox"/> <u>No</u> PICU <input type="checkbox"/> Yes <input checked="" type="checkbox"/> <u>No</u></p>	<p><u>Trauma Center:</u></p> <p><input type="checkbox"/> Yes <input checked="" type="checkbox"/> <u>No</u></p>	<p><u>If Trauma Center what level:</u></p> <p><input type="checkbox"/> Level I <input type="checkbox"/> Level II <input type="checkbox"/> Level III <input type="checkbox"/> Level IV</p>
--	---	---

<p><u>STEMI Center:</u></p> <p><input type="checkbox"/> Yes <input checked="" type="checkbox"/> <u>No</u></p>	<p><u>Stroke Center:</u></p> <p><input checked="" type="checkbox"/> <u>Yes</u> <input type="checkbox"/> No</p>
--	--

Table 9: Resources Directory

Reporting Year: 2017

Facilities

County: Contra Costa County

Facility: Kaiser Permanente Med. Ctr., Walnut Creek
Address: 1425 South Main Street
Walnut Creek, CA 94596

Telephone Number: 925-295-4000

<u>Written Contract:</u> <input checked="" type="checkbox"/> Yes <input type="checkbox"/> No	<u>Service:</u> <input type="checkbox"/> Referral Emergency <input type="checkbox"/> Standby Emergency <input checked="" type="checkbox"/> <u>Basic Emergency</u> <input type="checkbox"/> Comprehensive Emergency	<u>Base Hospital:</u> <input type="checkbox"/> Yes <input checked="" type="checkbox"/> No	<u>Burn Center:</u> <input type="checkbox"/> Yes <input checked="" type="checkbox"/> No
---	--	--	--

Pediatric Critical Care Center EDAP PICU	<input type="checkbox"/> Yes <input checked="" type="checkbox"/> No <input type="checkbox"/> Yes <input checked="" type="checkbox"/> No <input type="checkbox"/> Yes <input checked="" type="checkbox"/> No	<u>Trauma Center:</u> <input type="checkbox"/> Yes <input checked="" type="checkbox"/> No	<u>If Trauma Center what level:</u> <input type="checkbox"/> Level I <input type="checkbox"/> Level II <input type="checkbox"/> Level III <input type="checkbox"/> Level IV
---	--	--	--

<u>STEMI Center:</u> <input checked="" type="checkbox"/> Yes <input type="checkbox"/> No	<u>Stroke Center:</u> <input checked="" type="checkbox"/> Yes <input type="checkbox"/> No
---	--

Table 9: Resources Directory

Reporting Year: 2017

Facilities

County: Contra Costa County

Facility: Kaiser Permanente Med. Ctr., Richmond
Address: 901 Nevin Avenue
Richmond, CA 94801

Telephone Number: 510-307-1500

<u>Written Contract:</u> <input checked="" type="checkbox"/> <u>Yes</u> <input type="checkbox"/> No	<u>Service:</u> <input type="checkbox"/> Referral Emergency <input type="checkbox"/> Standby Emergency <input checked="" type="checkbox"/> <u>Basic Emergency</u> <input type="checkbox"/> Comprehensive Emergency	<u>Base Hospital:</u> <input type="checkbox"/> Yes <input checked="" type="checkbox"/> <u>No</u>	<u>Burn Center:</u> <input type="checkbox"/> Yes <input checked="" type="checkbox"/> <u>No</u>
--	--	---	---

Pediatric Critical Care Center EDAP PICU	<input type="checkbox"/> Yes <input checked="" type="checkbox"/> <u>No</u> <input type="checkbox"/> Yes <input checked="" type="checkbox"/> <u>No</u> <input type="checkbox"/> Yes <input checked="" type="checkbox"/> <u>No</u>	<u>Trauma Center:</u> <input type="checkbox"/> Yes <input checked="" type="checkbox"/> <u>No</u>	<u>If Trauma Center what level:</u> <input type="checkbox"/> Level I <input type="checkbox"/> Level II <input type="checkbox"/> Level III <input type="checkbox"/> Level IV
---	---	---	--

<u>STEMI Center:</u> <input type="checkbox"/> Yes <input checked="" type="checkbox"/> <u>No</u>	<u>Stroke Center:</u> <input checked="" type="checkbox"/> <u>Yes</u> <input type="checkbox"/> No
--	---

Table 9: Resources Directory

Reporting Year: 2017

Facilities

County: Contra Costa County

Facility: San Ramon Regional Medical Center
Address: 6001 Norris Canyon Road
San Ramon, CA 94583

Telephone Number: 925-275-9200

<p><u>Written Contract:</u></p> <p><input checked="" type="checkbox"/> <u>Yes</u> <input type="checkbox"/> No</p>	<p><u>Service:</u></p> <p><input type="checkbox"/> Referral Emergency <input type="checkbox"/> Standby Emergency <input checked="" type="checkbox"/> <u>Basic Emergency</u> <input type="checkbox"/> Comprehensive Emergency</p>	<p><u>Base Hospital:</u></p> <p><input type="checkbox"/> Yes <input checked="" type="checkbox"/> <u>No</u></p>	<p><u>Burn Center:</u></p> <p><input type="checkbox"/> Yes <input checked="" type="checkbox"/> <u>No</u></p>
---	---	--	--

<p>Pediatric Critical Care Center <input type="checkbox"/> Yes <input checked="" type="checkbox"/> <u>No</u> EDAP <input type="checkbox"/> Yes <input checked="" type="checkbox"/> <u>No</u> PICU <input type="checkbox"/> Yes <input checked="" type="checkbox"/> <u>No</u></p>	<p><u>Trauma Center:</u></p> <p><input type="checkbox"/> Yes <input checked="" type="checkbox"/> <u>No</u></p>	<p><u>If Trauma Center what level:</u></p> <p><input type="checkbox"/> Level I <input type="checkbox"/> Level II <input type="checkbox"/> Level III <input type="checkbox"/> Level IV</p>
--	--	---

<p><u>STEMI Center:</u></p> <p><input checked="" type="checkbox"/> <u>Yes</u> <input type="checkbox"/> No</p>	<p><u>Stroke Center:</u></p> <p><input checked="" type="checkbox"/> <u>Yes</u> <input type="checkbox"/> No</p>
---	--

Table 9: Resources Directory

Reporting Year: 2017

Facilities

County: Contra Costa County

Facility: Sutter Delta Medical Center
Address: 3901 Lone Tree Way
Antioch, CA 94509

Telephone Number: 925-779-7200

<p><u>Written Contract:</u></p> <p><input checked="" type="checkbox"/> Yes <input type="checkbox"/> No</p>	<p><u>Service:</u></p> <p><input type="checkbox"/> Referral Emergency <input type="checkbox"/> Standby Emergency <input checked="" type="checkbox"/> Basic Emergency <input type="checkbox"/> Comprehensive Emergency</p>	<p><u>Base Hospital:</u></p> <p><input type="checkbox"/> Yes <input checked="" type="checkbox"/> No</p>	<p><u>Burn Center:</u></p> <p><input type="checkbox"/> Yes <input checked="" type="checkbox"/> No</p>
--	--	---	---

<p>Pediatric Critical Care Center <input type="checkbox"/> Yes <input checked="" type="checkbox"/> No EDAP <input type="checkbox"/> Yes <input checked="" type="checkbox"/> No PICU <input type="checkbox"/> Yes <input checked="" type="checkbox"/> No</p>	<p><u>Trauma Center:</u></p> <p><input type="checkbox"/> Yes <input checked="" type="checkbox"/> No</p>	<p><u>If Trauma Center what level:</u></p> <p><input type="checkbox"/> Level I <input type="checkbox"/> Level II <input type="checkbox"/> Level III <input type="checkbox"/> Level IV</p>
---	---	---

<p><u>STEMI Center:</u></p> <p><input checked="" type="checkbox"/> Yes <input type="checkbox"/> No</p>	<p><u>Stroke Center:</u></p> <p><input type="checkbox"/> Yes <input checked="" type="checkbox"/> No</p>
--	---

TABLE 10: RESOURCES DIRECTORY -- Approved Training Programs

County: Contra Costa County

Reporting Year: 2017

Training Institution:	<u>Los Medanos College</u>		Telephone Number:	<u>925-473-7752</u>
Address:	<u>2700 East Leland Road</u>			
	<u>Pittsburg, CA 94563</u>			
Student Eligibility:	<u>Open to</u> <u>The public</u>	Cost of Program: Basic: <u>\$48/unit</u> Refresher: <u>\$46/unit</u>	Program Level	<u>EMT</u>
			Number of students completing training per year:	
			Initial training:	<u>181</u>
			Refresher:	<u>14</u>
			Continuing Education:	<u>0</u>
			Expiration Date:	<u>5/31/2020</u>
			Number of courses:	
			Initial training:	<u>5</u>
			Refresher:	<u>1</u>
			Continuing Education:	<u>0</u>

TABLE 10: RESOURCES DIRECTORY -- Approved Training Programs

County: Contra Costa County

Reporting Year: 2017

Training Institution:		<u>Mt. Diablo Adult Education</u>		Telephone Number: (925) 685-7340	
Address:		<u>1266 San Carlos Avenue</u>			
		<u>Concords, CA 94518</u>			
Program Level EMT					
Student Eligibility:	Open to General Public	Cost of Program:	Number of students completing training per year:		
		Basic: \$1613	Initial training		27
		Refresher: \$288	Refresher:		15
			Continuing Education:		NA
			Expiration Date:		3/31/2022
			Number of courses:		
			Initial Training:		2
			Refresher:		3
			Continuing Education:		13-15

TABLE 10: RESOURCES DIRECTORY -- Approved Training Programs

County: Contra Costa County

Reporting Year: 2017

Training Institution: <u>John Muir Health, Walnut Creek</u>		Telephone Number: <u>925-947-4438</u>
Address: <u>1601 Ygnacio Valley Road</u> <u>Walnut Creek, CA 94598</u>		
Program Level: MICN Training		
Student Eligibility:		
a. BLS	Cost of Program:	
b. ACLS	Basic: <u>\$0.00</u>	Number of students completing training per year:
c. PALS	Refresher: <u>\$0.00</u>	Initial Training: 10-15
d. TNCC		Refresher: 0
e. Minimum 2 years ED. Exper.		Continuing Education: NA
f. In-House Training only		Expiration Date: 9/30/2019
		Number of Courses:
		Initial Training:
		Refresher: NA
		Continuing Education: 6 per year 2 hour/2 CE Base Tape review

TABLE 10: RESOURCES DIRECTORY -- Approved Training Programs

County: Contra Costa County

Reporting Year: 2017⁷

Training Institution: <u>Contra Costa College</u>		Telephone Number: 510-215-3865	
Address: <u>2600 Mission Bell Drive</u> <u>San Pablo, CA 94806</u>			
Program Level: <u>EMT Training</u>			
Student Eligibility: <u>Open to Public</u>	Cost of Program:	Number of students completing training per year:	
	Basic: <u>\$500-1000</u>	Initial Training:	60
	Refresher: <u>\$46/unit</u>	Refresher:	15-25
		Continuing Education:	2
		Expiration Date:	8/31/2019
		Number of Courses:	
		Initial Training	2
		Refresher:	1
		Continuing Education:	2

TABLE 11: RESOURCES DIRECTORY -- Dispatch Agency

County: Contra Costa County

Reporting Year: 2017

Name:	<u>San Ramon Valley Fire Dispatch</u>	Primary Contact:
Address:	<u>800 San Ramon Valley Road</u> <u>Danville, CA 94526</u>	Denise Pangelinan Communications Center Manager
Telephone Number:	925-838-6645	
Written Contract: <u>X Yes</u> <input type="checkbox"/> No	Medical Director: <u>X Yes</u> <input type="checkbox"/> No	Number of Personnel Providing Services:
	<u>X Day-to-Day</u> <u>X Disaster</u>	<u>13 EMD Training</u> <input type="checkbox"/> EMT-D <input type="checkbox"/> ALS <input type="checkbox"/> BLS <input type="checkbox"/> LALS <input type="checkbox"/> Other
Ownership: <u>X Public</u> <input type="checkbox"/> Private	If Public: <u>X Fire</u> <input type="checkbox"/> Law <input type="checkbox"/> Other Explain: _____	If Public: <input type="checkbox"/> City <input type="checkbox"/> County <input type="checkbox"/> State <u>X Fire District</u> <input type="checkbox"/> Federal

TABLE 11: RESOURCES DIRECTORY -- Dispatch Agency

County: Contra Costa County

Reporting Year: 2017

Name:	Contra Costa Sheriff's Office	Primary Contact:	Lisette Cortes Communications Center Director
Address:	40 Glacier Drive Martinez, CA 94553		
Telephone Number:	925-313-2454		
Written Contract: <u>X Yes</u> <input type="checkbox"/> No	Medical Director: <u>X Yes</u> <input type="checkbox"/> No	<u>X Day-to-Day</u> <u>X Disaster</u>	Number of Personnel Providing Services: _____ EMD Training <u>48</u> ²⁰ EMT-D _____ ALS _____ BLS _____ LALS _____ Other
Ownership: <u>X Public</u> <input type="checkbox"/> Private	If Public: <input type="checkbox"/> Fire <u>X Law</u> <input type="checkbox"/> Other Explain: _____	If Public: <input type="checkbox"/> City <u>X County</u> <input type="checkbox"/> State <input type="checkbox"/> Fire District <input type="checkbox"/> Federal	

²⁰ Average staffing 22 dispatchers/supervisors per day

TABLE 11: RESOURCES DIRECTORY -- Dispatch Agency

County: Contra Costa County

Reporting Year: 2017

NOTE: Make copies to add pages as needed. Complete information for each provider by county.

Name:	<u>Contra Costa Fire Dispatch</u>	Primary Contact:	<u>Traci Barkley Communications Specialist</u>
Address:	<u>2010 Geary Road</u> <u>Pleasant Hill, CA 94523</u>		
Telephone Number:	<u>925-941-3550</u>		
Written Contract: <input checked="" type="checkbox"/> <u>Yes</u> <input type="checkbox"/> No	Medical Director: <input checked="" type="checkbox"/> <u>Yes</u> <input type="checkbox"/> No	<input checked="" type="checkbox"/> <u>Day-to-Day</u> <input checked="" type="checkbox"/> <u>Disaster</u>	Number of Personnel Providing Services: <u>21</u> EMD Training _____ BLS _____ EMT-D _____ ALS _____ LALS _____ Other
Ownership: <input checked="" type="checkbox"/> <u>Public</u> <input type="checkbox"/> Private	If Public: <input checked="" type="checkbox"/> <u>Fire</u> <input type="checkbox"/> Law <input type="checkbox"/> Other Explain: _____	If Public: <input type="checkbox"/> City <input type="checkbox"/> County <input type="checkbox"/> State <input checked="" type="checkbox"/> <u>Fire District</u> <input type="checkbox"/> Federal	

TABLE 11: RESOURCES DIRECTORY -- Dispatch Agency

County: Contra Costa County

Reporting Year: 2017

NOTE: Make copies to add pages as needed. Complete information for each provider by county.

Name:	Richmond Communications Center	Primary Contact:	Michael Schlemmer, Communication Specialist
Address:	<u>326 27th Street</u> <u>Richmond, CA 94804</u>		
Telephone Number:	510-620-6660		
Written Contract: <input type="checkbox"/> Yes <input checked="" type="checkbox"/> <u>No</u>	Medical Director: <input checked="" type="checkbox"/> <u>Yes</u> <input type="checkbox"/> No	<input checked="" type="checkbox"/> <u>Day-to-Day</u> <input checked="" type="checkbox"/> <u>Disaster</u>	Number of Personnel Providing Services: <u>22</u> EMD Training <input type="checkbox"/> EMT-D <input type="checkbox"/> ALS <input type="checkbox"/> BLS <input type="checkbox"/> LALS <input type="checkbox"/> Other
Ownership: <input checked="" type="checkbox"/> <u>Public</u> <input type="checkbox"/> Private	If Public: <input checked="" type="checkbox"/> <u>Fire</u> <input checked="" type="checkbox"/> <u>Law</u> <input type="checkbox"/> Other Explain: _____	If Public: <input checked="" type="checkbox"/> <u>City</u> <input type="checkbox"/> County <input type="checkbox"/> State <input type="checkbox"/> Fire District <input type="checkbox"/> Federal	

AMBULANCE ZONE SUMMARY FORM: ERA I (2017)

<p><u>Local EMS Agency or County Name:</u></p> <p>Contra Costa County</p>
<p><u>Area or subarea (Zone) Name or Title:</u></p> <p>ERA I</p>
<p><u>Name of Current Provider(s):</u></p> <p>Contra Costa County Fire Protection District as part of an Alliance service delivery model utilizing American Medical Response as a sub-contractor – since 1/1/2016</p>
<p><u>Area or sub area (Zone) Geographic Description:</u></p> <p>ERA-I includes the cities of El Cerrito, Richmond, Pinole, Hercules, San Pablo, Kensington, Martinez, Pleasant Hill, Lafayette, and Walnut Creek west of Highway 680 and adjacent to unincorporated areas, excluding that portion of ERA I included in the Moraga-Orinda Fire Protection District.</p>
<p><u>Statement of Exclusivity, Exclusive or non-Exclusive (HS 1797.6):</u></p> <p>Exclusive.</p>
<p><u>Type of Exclusivity, “Emergency Ambulance”, “ALS”, or “LALS” (HS 1797.85):</u></p> <p>Emergency Ambulance, ALS, 9-1-1 emergency response and ALS interfacility transfers</p>
<p><u>Method to achieve Exclusivity, if applicable (HS 1797.224):</u></p> <p>Competitively-determined. Request for Proposal (RFP) and review process held in 2015. RFP released on February 27, 2015 and an exclusive 9-1-1 contract with Contra Costa Fire as primary contractor and American Medical Response as a sub-contractor to Contra Costa Fire, went into effect on January 1, 2016. As of April 13, 2018 EMSA advised that the ERA was considered non-exclusive. Contra Costa County has appealed that decision.</p>

AMBULANCE ZONE SUMMARY FORM: ERA II (2017)

<p><u>Local EMS Agency or County Name:</u></p> <p>Contra Costa County</p>
<p><u>Area or subarea (Zone) Name or Title:</u></p> <p>ERA II</p>
<p><u>Name of Current Provider(s):</u></p> <p>Contra Costa County Fire Protection District as part of an Alliance service delivery model utilizing American Medical Response as a sub-contractor – since 1/1/2016</p>
<p><u>Area or sub area (Zone) Geographic Description:</u></p> <p>ERA-II includes the cities of Clayton, Concord, Walnut Creek, east of Highway 680 and adjacent to unincorporated areas.</p>
<p><u>Statement of Exclusivity, Exclusive or non-Exclusive (HS 1797.6):</u></p> <p>Exclusive</p>
<p><u>Type of Exclusivity, “Emergency Ambulance”, “ALS”, or “LALS” (HS 1797.85):</u></p> <p>Emergency Ambulance, ALS, 9-1-1 emergency response and ALS interfacility transfers</p>
<p><u>Method to achieve Exclusivity, if applicable (HS 1797.224):</u></p> <p>Competitively-determined. Request for Proposal (RFP) and review process held in 2015. RFP released on February 27, 2015 and an exclusive 9-1-1 contract with Contra Costa Fire as primary contractor and American Medical Response as a sub-contractor to Contra Costa Fire, went into effect on January 1, 2016. As of April 13, 2018 EMSA advised that the ERA was considered non-exclusive. Contra Costa County has appealed that decision.</p>

AMBULANCE ZONE SUMMARY FORM: ERA III(2017)

<p><u>Local EMS Agency or County Name:</u></p> <p>Contra Costa County</p>
<p><u>Area or subarea (Zone) Name or Title:</u></p> <p>ERA III</p>
<p><u>Name of Current Provider(s):</u></p> <p>Moraga-Orinda Fire Protection District</p>
<p><u>Area or sub area (Zone) Geographic Description:</u></p> <p>ERA-III includes the territory of the Moraga-Orinda Fire Protection District.</p>
<p><u>Statement of Exclusivity, Exclusive or non-Exclusive (HS 1797.6):</u></p> <p>Exclusive</p>
<p><u>Type of Exclusivity, "Emergency Ambulance", "ALS", or "LALS" (HS 1797.85):</u></p> <p>Emergency Ambulance, ALS, 9-1-1 Emergency Response</p>
<p><u>Method to achieve Exclusivity, if applicable (HS 1797.224):</u></p> <p>Grandfathered with exclusivity pursuant to H.S. 1797.224. Moraga Fire Protection District began providing paramedic ambulance service throughout the territory of its jurisdiction in June 1977 and has continued on an uninterrupted basis. In December 1997, the territory of the Moraga Fire Protection District was combined with the territory of the Orinda Fire Protection District and a new Moraga-Orinda Fire Protection District formed and the County exclusive operating area agreement update to reflect the expanded territory. EMSA approved boundary adjustment as of January 30, 2003.</p>

AMBULANCE ZONE SUMMARY FORM: ERA IV(2017)

<p><u>Local EMS Agency or County Name:</u></p> <p>Contra Costa County</p>
<p><u>Area or subarea (Zone) Name or Title:</u></p> <p>ERA IV</p>
<p><u>Name of Current Provider(s):</u></p> <p>San Ramon Valley Fire Protection District</p>
<p><u>Area or sub area (Zone) Geographic Description:</u></p> <p>ERA IV includes the territory of San Ramon Valley Fire Protection District.</p>
<p><u>Statement of Exclusivity, Exclusive or non-Exclusive (HS 1797.6):</u></p> <p>Exclusive through October 21, 2018</p>
<p><u>Type of Exclusivity, "Emergency Ambulance", "ALS", or "LALS" (HS 1797.85):</u></p> <p>Emergency Ambulance, ALS, 9-1-1 Emergency Response</p>
<p><u>Method to achieve Exclusivity, if applicable (HS 1797.224):</u></p> <p>Periodic Request for proposal process. Request for proposal process postponed by Contra Costa County Board of Supervisors. to evaluate Fire District claim of 224 rights</p>

AMBULANCE ZONE SUMMARY FORM: ERA V (2017)

<p><u>Local EMS Agency or County Name:</u></p> <p>Contra Costa County</p>
<p><u>Area or subarea (Zone) Name or Title:</u></p> <p>ERA V</p>
<p><u>Name of Current Provider(s):</u></p> <p>Contra Costa County Fire Protection District as part of an Alliance service delivery model utilizing American Medical Response as a sub-contractor – since 1/1/2016</p>
<p><u>Area or sub area (Zone) Geographic Description:</u></p> <p>ERA-V includes all of East County including the cities of Pittsburg, Bay Point, Antioch, Brentwood and unincorporated areas along the 9-1-1 boundary line separating East from Central County.</p>
<p><u>Statement of Exclusivity, Exclusive or non-Exclusive (HS 1797.6):</u></p> <p>Exclusive.</p>
<p><u>Type of Exclusivity, “Emergency Ambulance”, “ALS”, or “LALS” (HS 1797.85):</u></p> <p>Emergency Ambulance, ALS, 9-1-1 emergency response and ALS interfacility transfers</p>
<p>Competitively-determined. Request for Proposal (RFP) and review process held in 2015. RFP released on February 27, 2015 and an exclusive 9-1-1 contract with Contra Costa Fire as primary contractor and American Medical Response as a sub-contractor to Contra Costa Fire, went into effect on January 1, 2016. As of April 13, 2018 EMSA advised that the ERA was considered non-exclusive. Contra Costa County has appealed that decision.</p>